

SECTION II

TM 9-2320-366-24P-1

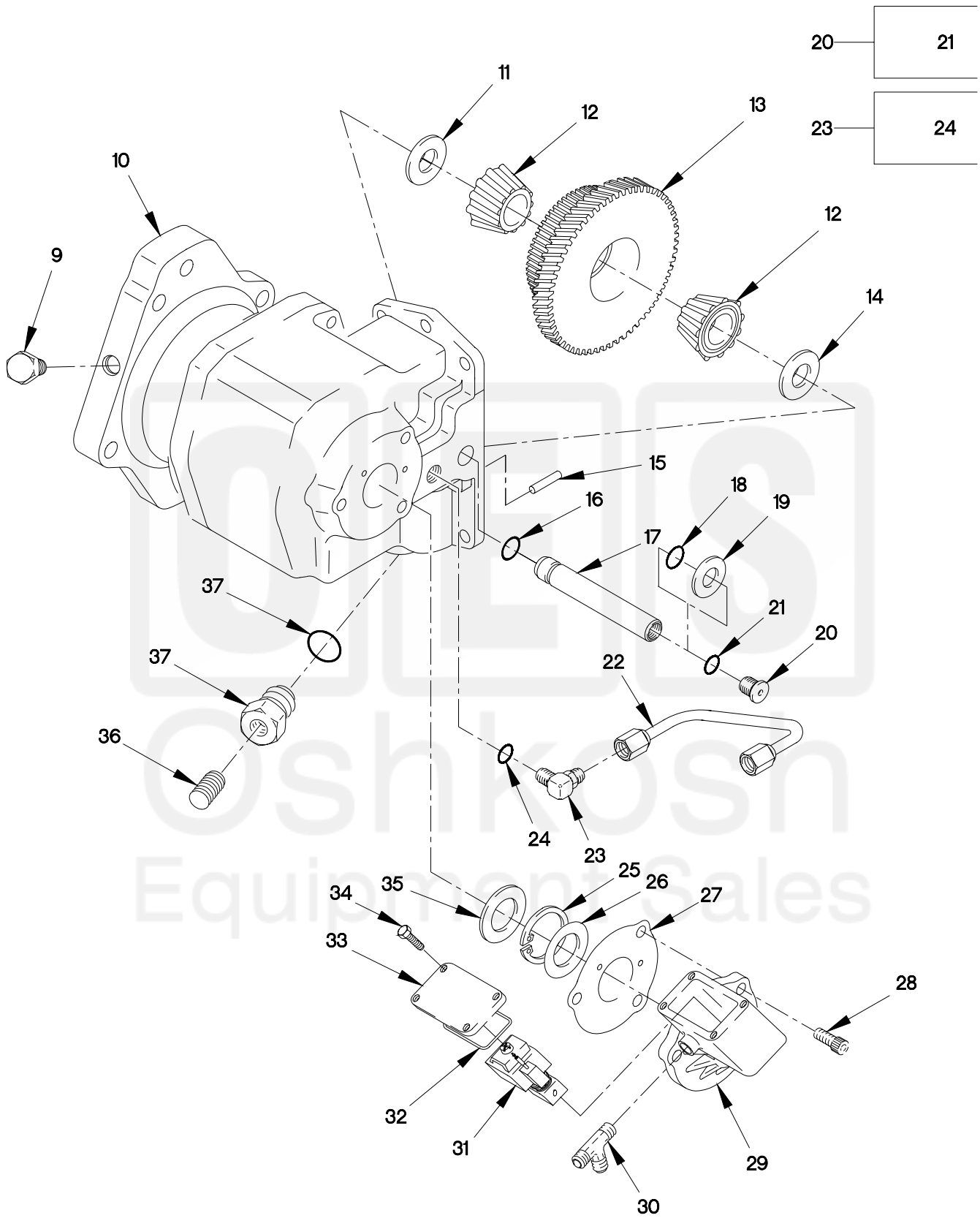


FIGURE 423. POWER TAKE-OFF ASSEMBLY (SHEET 2 OF 3)

2004A-2C

SECTION II

TM 9-2320-366-24P-1

(1) ITEM NO	(2) SMR CODE	(3) CAGEC	(4) PART NUMBER	(5) DESCRIPTION AND USABLE ON CODE (UOC)	(6) QTY
16	PAFZZ	11757	28-P-191	.O-RING..... UOC:MAE,MAG,MAH,MAJ,MAM,MWB,MWC,MWF, MWH,MWJ,MWL,	1
17	PAFZZ	11757	9-P-70	.SHAFT,IDLER USED ONLY ON PTO W/O PRESSURE LUBE..... UOC:MAE,MAG,MAH,MAJ,MAM,MWB,MWC,MWF, MWH,MWJ,MWL,	1
17	PAFZZ	8N900	9-P-91	.IDLER SHAFT STANDAR USED ONLY ON PTO W/ PRESSURE LUBE..... UOC:MAE,MAG,MAH,MAJ,MAM,MWB,MWC,MWF, MWH,MWJ,MWL,	1
18	PAFZZ	11757	28-P-190	.PACKING,PREFORMED USED ONLY ON PTO W/O PRESSURE LUBE..... UOC:MAE,MAG,MAH,MAJ,MAM,MWB,MWC,MWF, MWH,MWJ,MWL,	1
19	PAFZZ	11757	379505	.RETAINER,PACKING USED ONLY ON PTO W/O PRESSURE LUBE..... UOC:MAE,MAG,MAH,MAJ,MAM,MWB,MWC,MWF, MWH,MWJ,MWL,	1
20	PAFZZ	11757	379672	.PLUG,MACHINE THREAD USED ONLY ON PTO W/PRESSURE LUBE..... UOC:MAE,MAG,MAH,MAJ,MAM,MWB,MWC,MWF, MWH,MWJ,MWL,	1
20	PAFZZ	11757	379484	.PLUG,MACHINE THREAD USED ONLY ON PTO W/O PRESSURE LUBE..... UOC:MAE,MAG,MAH,MAJ,MAM,MWB,MWC,MWF, MWH,MWJ,MWL,	1
21	PAFZZ	96906	MS28778-6	.O-RING..... UOC:MAE,MAG,MAH,MAJ,MAM,MWB,MWC,MWF, MWH,MWJ,MWL,	1
22	PAFZZ	8N900	379660	.TUBE ASSEMBLY,METAL USED ONLY ON PTO W/ PRESSURE LUBE..... UOC:MAE,MAG,MAH,MAJ,MAM,MWB,MWC,MWF, MWH,MWJ,MWL,	1
23	PAFZZ	8N900	379659	.TEE,TUBE TO BOSS USED ONLY ON PTO W/O PRESSURE LUBE..... UOC:MAE,MAG,MAH,MAJ,MAM,MWB,MWC,MWF, MWH,MWJ,MWL,	1
24	PAFZZ	96906	MS28778-6	.O-RING..... UOC:MAE,MAG,MAH,MAJ,MAM,MWB,MWC,MWF, MWH,MWJ,MWL,	1
25	PAFZZ	11757	378849	.RING,RETAINING..... UOC:MAE,MAG,MAH,MAJ,MAM,MWB,MWC,MWF, MWH,MWJ,MWL,	1